

**Dressing Room**  
17'-8" x 7'-6"  
5.3m x 2.2m

**South Terrace**  
12'-4" x 41'-8"  
3.7m x 12.7m

Vertical garden wall for beauty and acoustic quality  
Custom-cut, open joint, stone pedestal mounted pavers  
Outdoor shower and gas run for grill hook up  
Integrated lighting features

**East Terrace**  
47'-2" x 9'-8"  
14.0m x 2.9m

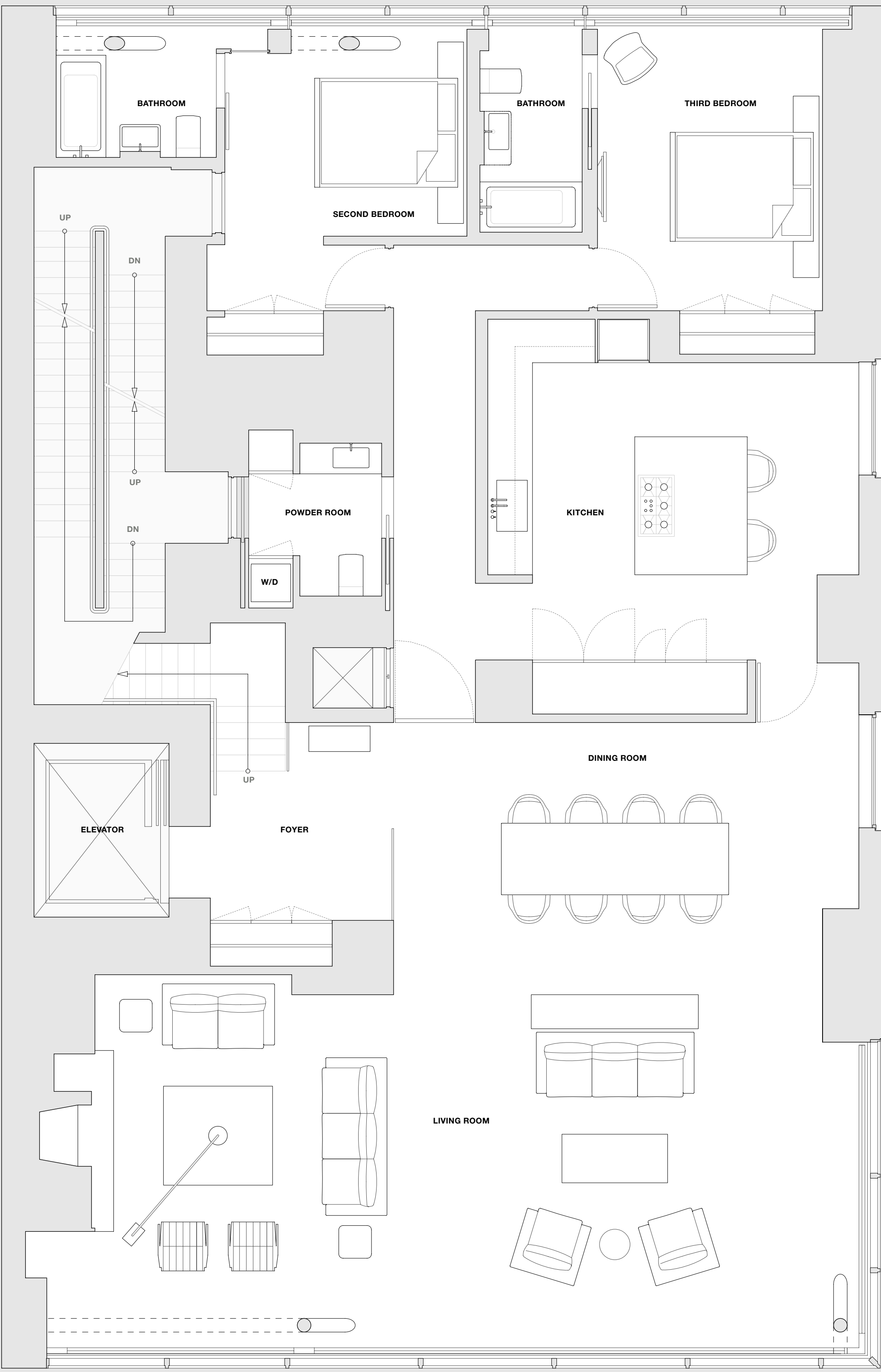
Custom-cut, open joint, stone pedestal mounted pavers  
Outdoor shower and gas run for grill hook up  
Integrated lighting features

**Master Bathroom En Suite**  
18'-6" x 11'-7"  
5.6m x 3.5m

Paonazzo marble slab floors  
Integrated Corian sink and vanity  
Vola chrome faucets with one-handle mixer  
Custom over-sized Corian sunken bathtub  
Separate, Paonazzo marble-clad double shower with low-iron acid-etched frameless glass enclosure  
Lefroy Brooks 8" shower heads with projected arm  
Duravit Caro wall-mounted toilet in separate marble clad enclosure  
Aprilaire temperature sensor with remote and thermostat  
Nuheat floor heating system  
Floor to ceiling glass with operable window with bottom up shade for privacy

**Master Bedroom**  
22'-10" x 18'-11"  
6.9m x 5.7m

Motorized, deployable glass wall for complete integration with the outdoors  
Oil-finished, Dinesen wide plank European oak flooring  
Aprilaire temperature sensor with remote thermostat  
Oversized dressing room/large walk-in-closet



**Second Bathroom**  
7'-10" x 7'-4"  
2.3m x 2.2m

Stone-clad walls  
Honed-stone floors  
Duravit vanity with chrome pop-up drain  
Vola chrome faucets with one handle mixer  
Zuma tub  
Vola Thermostatic mixer and showerhead  
Duravit Caro wall-mounted toilet  
Floor-to-ceiling glass with operable window with bottom up shade for privacy

**Second Bedroom**  
11'-10" x 11'-2"  
3.6m x 3.4m

Oil-finished, Dinesen wide plank European oak flooring  
Aprilaire temperature sensor with remote thermostat

**Powder Room**  
6'-6" x 7'-5"  
1.9m x 2.2m

Mutina porcelain tile clad walls  
Honed stone floors  
Integrated Corian sink and vanity  
Vola chrome faucets with one-handle mixer  
Miele large capacity washer and dryer  
Duravit Caro wall-mounted toilet  
Aprilaire remote temperature sensor with remote and thermostat

**Dining Room**  
22'-9" x 13'-4"  
6.9m x 4.0m

Oil-finished, Dinesen wide plank European oak flooring  
Aprilaire temperature sensor with remote thermostat

**Third Bedroom**  
11'-0" x 14'-10"  
3.3m x 4.5m

Oil-finished, Dinesen wide plank European oak flooring  
Aprilaire temperature sensor with remote thermostat

**Third Bathroom**  
5'-0" x 11'-0"  
1.5m x 3.3m

Custom-cut glass tile backsplash  
Honed-stone floor  
Duravit vanity with chrome pop-up drain  
Vola chrome faucets with one-handle mixer  
Zuma Tub  
Vola thermostatic mixer and showerhead  
Duravit Caro floor-mounted toilet  
Floor-to-ceiling glass with operable window with bottom up shade for privacy

**Eat-In Kitchen**  
18'-2" x 19'-3"  
5.5m x 5.8m

Miele 36" natural gas cooktop with stainless steel knobs  
Miele 30" double stainless steel oven with classic door handle  
Miele warming drawer  
Miele speed oven  
Miele double, fully integrated dishwashers  
Miele double, 30" refrigerator columns  
Miele 18" freezer column  
Miele 24" wine cellar  
Miele 24" plumbed built-in coffee system  
Custom designed and built Poliform cabinetry with integrated pulls  
Corian countertops  
Vola one-handle mixer with double swivel spout polished chrome faucet  
Separate Vola pull-out hand spray  
Blanco stainless steel sink  
Miele 40" decorator exhaust visor hood with metal filter  
Stainless steel food waste disposal  
Oil finished, Dinesen wide plank European oak flooring

**Living Room**  
38'-5" x 19'-1"  
11.7m x 5.8m

Oil-finished, Dinesen wide plank European oak flooring  
Aprilaire temperature sensor with remote thermostat  
Wood burning fireplace with custom slate enclosure

**Additional Features**

Unique custom exterior finish  
Elevator entry foyer  
Dedicated elevator stop for 13th and 14th floor  
Internal stair with window for natural light  
Enormous great room, approximately 20' x 40'  
Elevator reaches mechanical floor for utmost privacy  
Miele large capacity washer and dryer  
Runtal unit perimeter heating system – the smallest and most efficient system available  
Heat pump system and all ducts acoustically engineered for noise reduction  
Fresh air supply ducted from roof  
Motorized shades along North/South facade  
Lutron Verti lighting switches  
Double shaft trash shoot for garbage and recyclables  
Dedicated kitchen hood, vented to the exterior  
All full baths have natural light and operable windows  
Custom millwork doors  
Nanz hardware throughout  
Integrated cove lighting fixtures

