

Twenty-Third Street at The High Line
New York City

On-Site Sales Tin
504 West 24th Street
New York, NY 10011
Phone 212 243 HL23
Fax 212 243 4524

www.HL23.com

Full-Floor Residence
Floor Five

2104 SF / 196 SM

3 Bedrooms
2 Baths

Master Bathroom En Suite

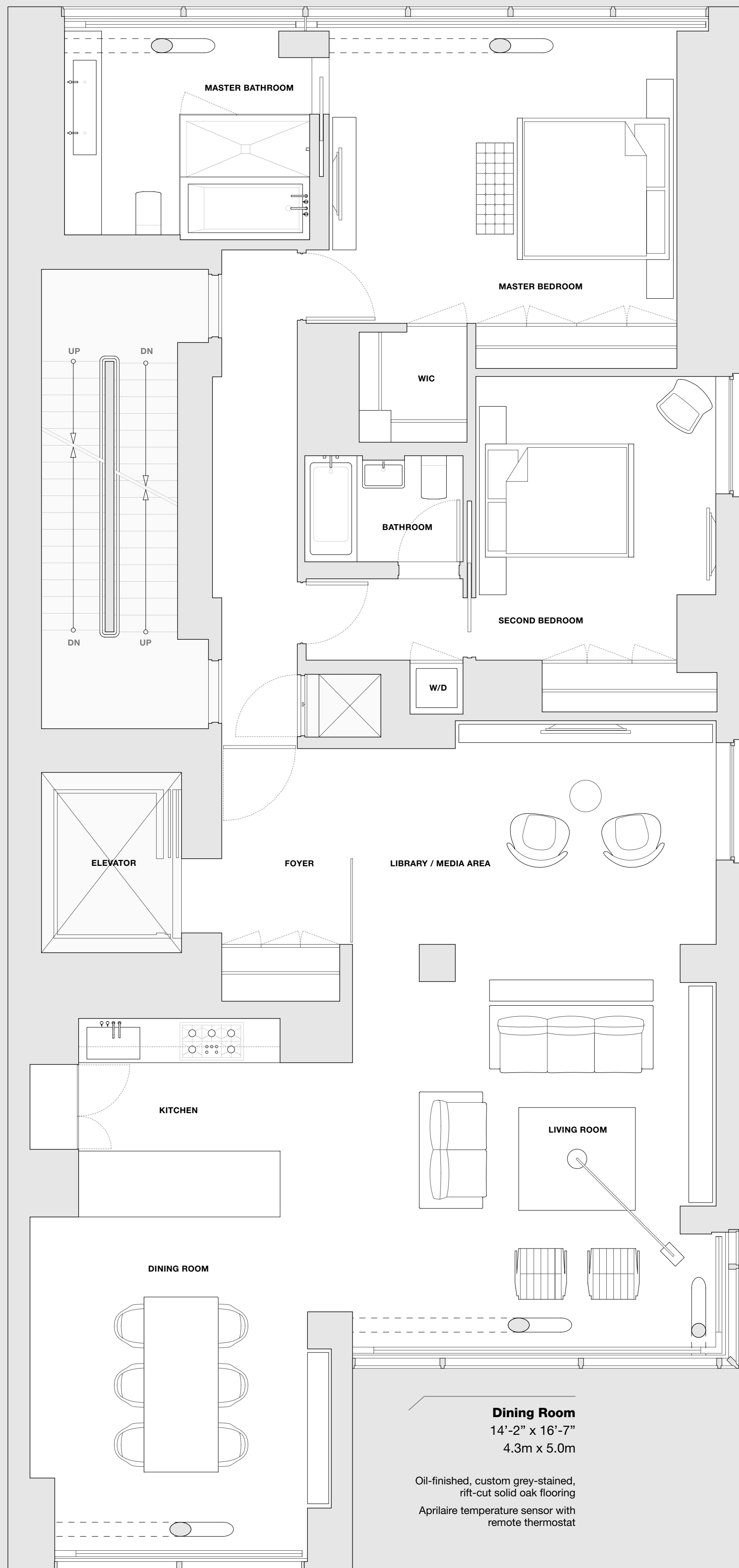
11'-7" x 10'-10"
3.5m x 3.3m

- Paonazzo marble slab feature wall
- Honed-stone slab floors
- Integrated Corian sink and vanity
- Wet-room with Boffi "Swim" tub and Paonazzo marble slab-clad shower with low-iron frameless glass
- Vola chrome faucets with one-handle mixer
- Lefroy Brooks 8" showerhead with projected arm
- Duravit Caro wall-mounted toilet
- Apriliaire temperature sensor with remote thermostat
- Nuheat floor heating system
- Floor-to-ceiling glass with operable window and bottom up shade for privacy

Kitchen

11'-9" x 9'-4"
3.5m x 2.8m

- Miele 30" natural gas cooktop with stainless steel knobs
- Miele 30" single stainless steel oven with classic door handle
- Miele speed oven
- Miele fully integrated dishwasher
- Miele 30" refrigerator column
- Miele 18" freezer column
- Custom-designed and built Poliform cabinetry with integrated pulls
- Corian countertops
- Vola one-handle mixer with double swivel spout polished chrome faucet
- Separate Vola pull-out hand spray
- Blanco stainless steel sink
- Gaggenau 36" exhaust visor hood with metal filter
- Stainless steel food waste disposal
- Oil-finished, custom grey-stained, rift-cut solid oak flooring



Master Bedroom

16'-5" x 14'-10"
5.0m x 4.5m

- Oil-finished, custom grey-stained, rift-cut solid oak flooring
- Apriliaire temperature sensor with remote thermostat
- Walk-in-closet

Bathroom

7'-5" x 5'-0"
2.2m x 1.5m

- Stone-clad walls
- Honed-stone floors
- Duravit vanity with chrome pop-up drain
- Vola chrome faucets with one-handle mixer
- Zuma tub
- Vola Thermostatic mixer and showerhead
- Duravit Caro wall-mounted toilet

Second Bedroom

11'-3" x 13'-4"
3.4m x 4.0m

- Oil-finished, custom grey-stained, rift-cut solid oak flooring
- Apriliaire temperature sensor with remote thermostat

Library / Media Area

17'-2" x 10'-6"
5.2m x 3.2m

- Oil-finished, custom grey-stained, rift-cut solid oak flooring
- Apriliaire temperature sensor with remote thermostat

Living Room

17'-2" x 19'-11"
5.2m x 6.0m

- Oil-finished, custom grey-stained, rift-cut solid oak flooring
- Apriliaire temperature sensor with remote thermostat

Dining Room

14'-2" x 16'-7"
4.3m x 5.0m

- Oil-finished, custom grey-stained, rift-cut solid oak flooring
- Apriliaire temperature sensor with remote thermostat

Additional Features

- Elevator entry foyer
- Miele large capacity washer and dryer
- Runtal unit perimeter heating system – the smallest and most efficient system available
- Heat pump system and all ducts acoustically engineered for noise reduction
- Fresh air supply ducted from roof
- Motorized shades along north/douth and corner east facade
- Lutron Verti lighting switches
- Double shaft trash chute for garbage and recyclables
- Kitchen hood vented to the exterior
- Custom millwork doors
- Nanz hardware throughout
- Crisunid Crimar marble-laminated glass in foyer
- Integrated cove lighting fixtures

